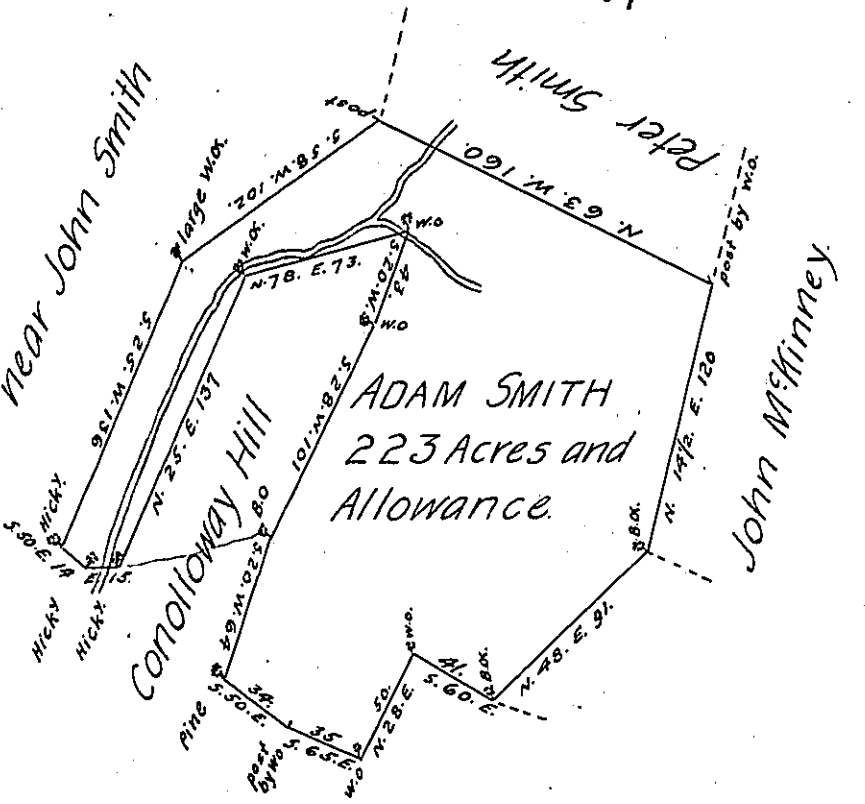


B9 165



Surveyed Land

A Draught of a Tract of Land called Cloverfield, situate on white Oak Run about half a Mile above where it empties into Conalloway Creek adjoining & below Lands of Peter Smith, in Bethel Township, in the County of Bedford. Containing two hundred & twenty three Acres and the usual Allowance of six $\frac{1}{2}$ Cent for Roads &c. Surveyed the 18th Day of June 1774 for Adam Smith in pursuance of an Order N^o 1767 Dated the 31st Day of October 1766, by

Thomas Smith, D.S.

To John Lukens, Esq^r.
 Surveyor General.

IN TESTIMONY that the above is a copy of the original remaining on file in the Department of Internal Affairs of Pennsylvania, made conformably to an Act of Assembly approved the 16th day of February, 1833, I have hereunto set my Hand and caused the Seal of said Department to be affixed at Harrisburg, this tenth day of October 1906.

Joseph P. Brown
 Secretary of Internal Affairs.